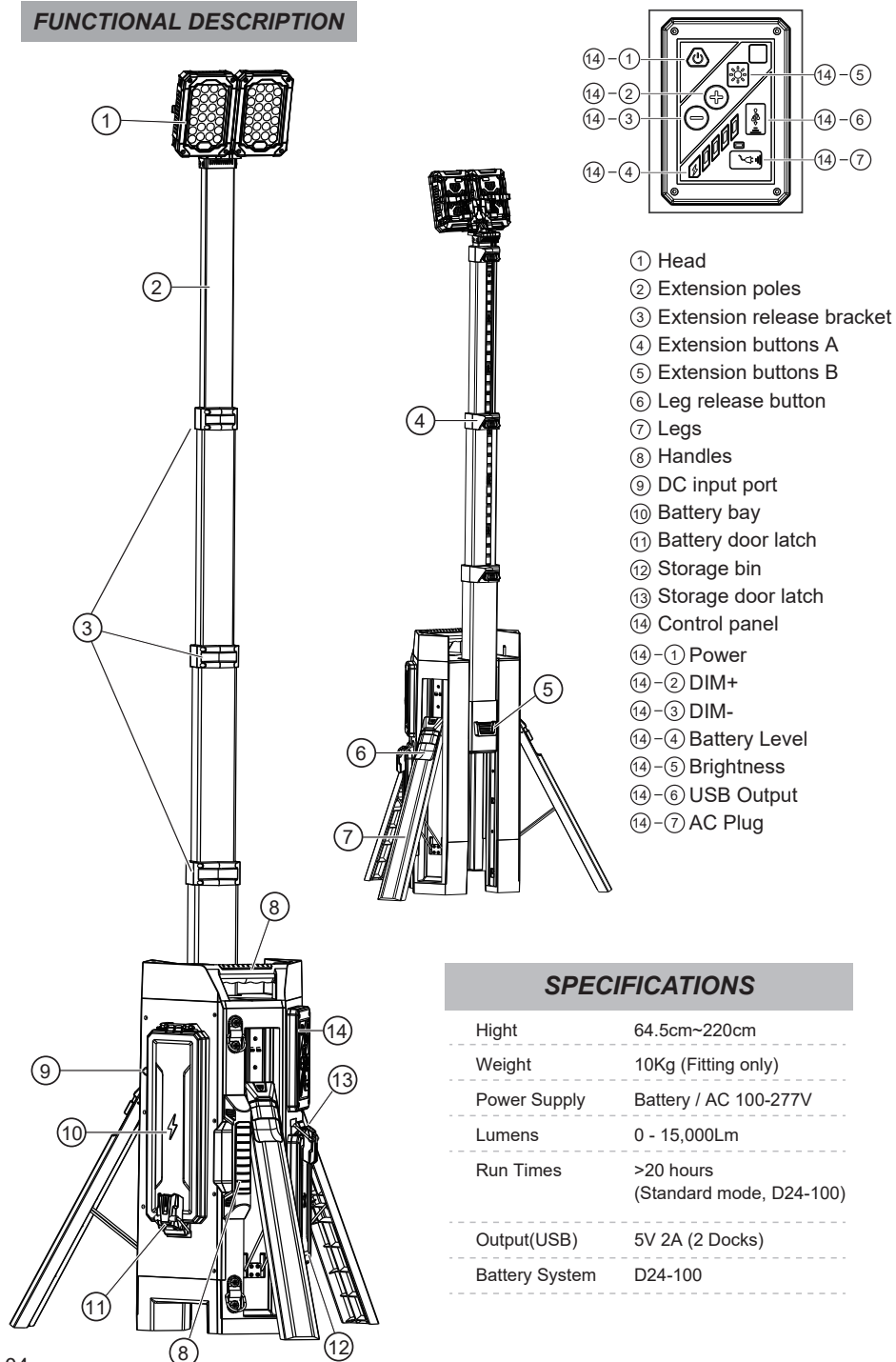


FUNCTIONAL DESCRIPTION



SPECIFICATIONS

Hight	64.5cm~220cm
Weight	10Kg (Fitting only)
Power Supply	Battery / AC 100-277V
Lumens	0 - 15,000Lm
Run Times	>20 hours (Standard mode, D24-100)
Output(USB)	5V 2A (2 Docks)
Battery System	D24-100

OPERATOR'S MANUAL



WARNING

TO REDUCE THE RISK OF INJURY,
USER MUST READ AND UNDERSTAND
OPERATOR'S MANUAL.

SYMBOLGY



Volts



Direct Current



Do Not Stare
Into Light !



WARNING

Read and understand all instructions. When using electric appliances, basic precautions should always be followed, including the following:

- Before using, read this operator's manual, your battery pack and charger operator's manual, and all labels on the battery pack, charger, and light. Learn your light's applications and limitations as well as potential hazards associated with this type of tool.
- Read and understand all the instructions before using the appliance.
- To reduce the risk of injury, close supervision is necessary when any appliance is used near children.
- Warning - The lens may get hot during use. To reduce the risk of burns, do not touch hot lenses.
- Store idle light out of reach of children. Warm lights can become hazardous in the hands of children.
- Suitable for rain and wet locations. Store indoors.
- Use light only with a specifically designated battery pack. The use of any other batteries may create a risk of fire.
- Batteries must be recharged only with the charger specified by the manufacturer. A charger that may be suitable for one type of battery may create a risk of fire when used with another battery.
- Do not use a battery pack or tool that is damaged or modified. Damaged or modified batteries may exhibit unpredictable behavior resulting in fire, explosion, or risk of injury.
- When the battery pack is not in use, keep it away from metal objects like paper clips, coins, keys, nails, screws, or other small metal objects that can make a connection from one terminal to another. Shorting the battery terminals together may cause sparks, burns, or a fire.
- Do not expose a battery pack or tool to fire or excessive temperature. Exposure to fire or temperature above 265°F (130°C) may cause an explosion.
- Under abusive conditions, liquid may be ejected from the battery; avoid contact. If contact accidentally occurs, flush with water. If liquid contacts the eyes, additionally seek medical help. Liquid ejected from the battery may cause irritation or burns.
- Follow all charging instructions and do not charge the battery pack or tool outside the temperature range specified in the instructions. Charging improperly or at temperatures outside the specified range may damage the battery and increase the risk of fire.
- Never service damaged battery packs. Service of battery packs should only be performed by the manufacturer or authorized service providers.

ASSEMBLY

WARNING

Recharge only with the charger specified for the battery.
For specific charging instructions, read the operator's manual supplied with your charger and battery.

Inserting/Removing Battery Packs

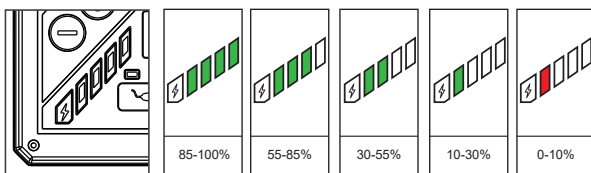
Unlatch the battery door and open it to access the battery bays.
Insert a battery pack by sliding the battery pack into a battery bay. Insert the battery pack until the battery latches lock.

Close and latch the battery door.

To remove a battery pack, press in both battery latches and slide the battery pack out of the battery bay.

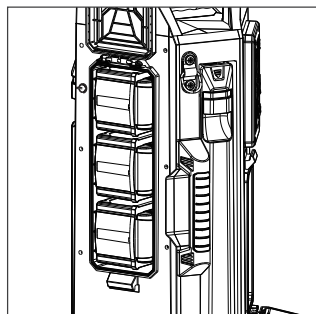
NOTE: Always ensure the battery door gasket is clean and clear of dirt and debris. Close the battery door latches securely to ensure water cannot enter the battery compartment.

☐ Electricity



Use the Fuel Gauge to determine the TL-400's remaining run time. Press the Fuel Gauge button to display the lights.

NOTE: When the battery is about to run out, the TL-400 will flash slowly.



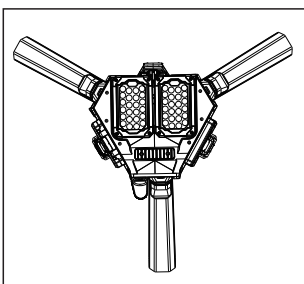
Extending/Collapsing the Legs

Always extend and lock the legs before raising the poles.

1. To extend the legs, stand the light on the end and press the leg release button.

2. Pull the leg release button all the way up until legs locked.

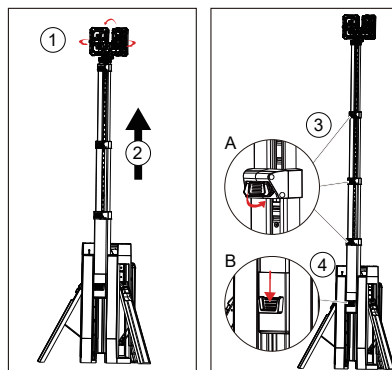
Use the **stabilizing position** when positioning the light over a ditch or hole.



Extending/Retract the Extension Poles

1. Rotate the head to the desired position.
2. Grab the light head all the way up to the desired position, the ratchet pole locks automatically
3. Press extension buttons A and push the upper pole down.
4. Push extension buttons B down and release the entire retracted pole to its initial position.

NOTE: After a long time stretch, please fold one of the sections first, then fold the rest after an hour.



WARNING



To reduce the risk of injury, do not look directly into the light when the light is on.
To reduce the risk of injury, always fully extend and lock legs into position before raising the poles.

To reduce the risk of injury, keep hands clear of the housing area when collapsing the extension poles. Head may descend rapidly, pinching hands and fingers.

OPERATION

WARNING To reduce the risk of injury, do not look directly into the light when the light is on.

Using the Light - Battery Packs

1. Insert battery pack(s). Close and latch the battery door.
2. Press the Power  button to turn on the light.
3. Press the - and + buttons to cycle through High, Medium, Low and limit.
4. Press the Power  button to turn the light off.

Using the Light - Driver

1. Open the soft cover of the AC charging port.
2. Insert the driver output plug until green indicator light up.
3. Use the carabiner to attach the driver to a safe location.
4. Connect the driver input plug to AC 100-277V main power supply.

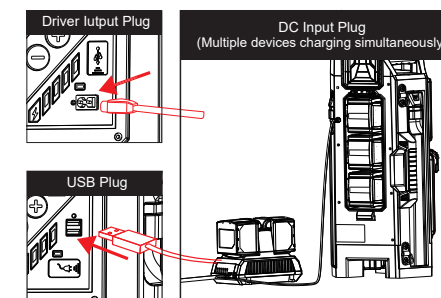
Charging your mobile devices

Open the soft cover and connect your mobile device with USB plug which compatible with 5V 2A DC input current.

Using the Light - DC

The battery in the light tower is charged through the external output line of the charger, and the luminaire can work simultaneously.

NOTE: When the external input cable of the charger is plugged into the light, the light will automatically run on DC power.



MAINTENANCE

WARNING

To reduce the risk of injury, always unplug the charger and remove the battery pack from the charger or tool before performing any maintenance. Never disassemble the tool, battery pack or charger.

Maintain Light

Keep your light, battery pack and charger in good repair by adopting a regular maintenance program.
If the light does not work properly, return the light to service facility for repairs.

WARNING

To reduce the risk of personal injury and damage, never immerse your tool, battery pack or charger in liquid or allow a liquid to flow inside them.

Cleaning

Clean dust and debris from vents. Keep handles clean, dry and free of oil or grease. Use only mild soap and a damp cloth to clean, since certain cleaning agents and solvents are harmful to plastics and other insulated parts. Do not use sprays or solvents.
Some of these include gasoline, turpentine, lacquer thinner, paint thinner, chlorinated cleaning solvents, ammonia and household detergents containing ammonia. Never use flammable or combustible solvents around tools.

ACCESSORIES

WARNING

Use only recommended accessories. Others may be hazardous.
For a complete listing of accessories.