

TL-100

Deployable portable lighting in one bespoke robust package.

Portable
Light
Tower



EXPAND OR COLLAPSE WITHIN 1 SECOND

World's lightest portable light tower, one second operation.

Grab and lift the lamp head to 1.4m for automatic locking; tap down to reset and lock.



LIGHT HEAD FREELY ADJUSTABLE

Built-in damping enables tool-free light head adjustment with a finely-tuned, perfect tactile feel.



GLOBAL LIGHTTEST 1.4M LIGHT TOWER

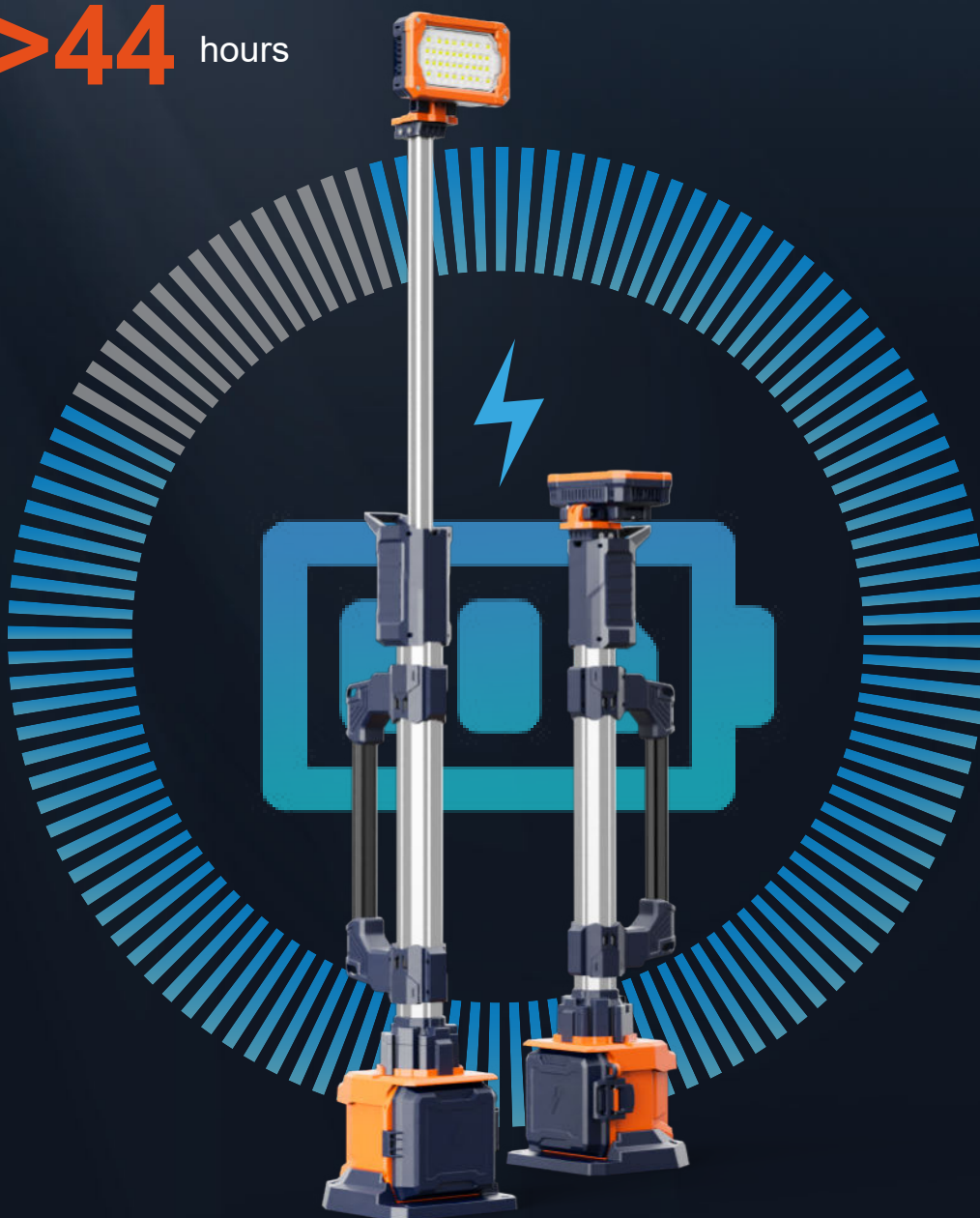
Super light-weight, with an handgrip, improve your work experience delightfully.



Ultra-long Working Hours (D24-100)

Standard mode **>8** hours

Eco mode **>44** hours



2 types of battery packs with different capacities are available.



D24-54

Typical working hours 22+ hours
on Eco mode.



D24-100

Doubled typical working hours to
44 hours

ONE-KEY ADJUSTMENT FOR MULTIPLE BRIGHTNESS MODES

ECO

450LM

Balanced

1500LM

Standard

2500LM

Turbo

4000LM

44h

16.8h

8.5h

4.2h

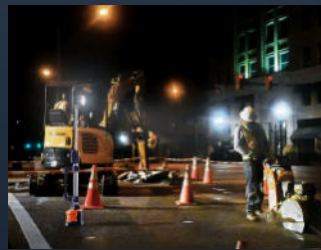
Battery-powered
Up To

4000LM

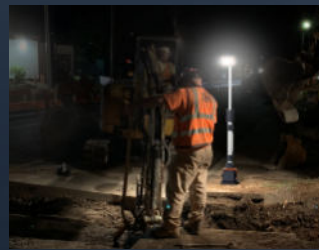




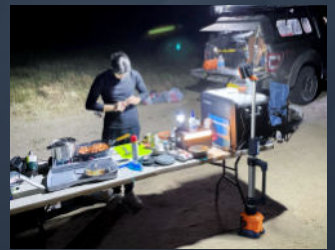
Construction



Maintenance



Road Rescue



Camping



Repair



Railway



Emergency

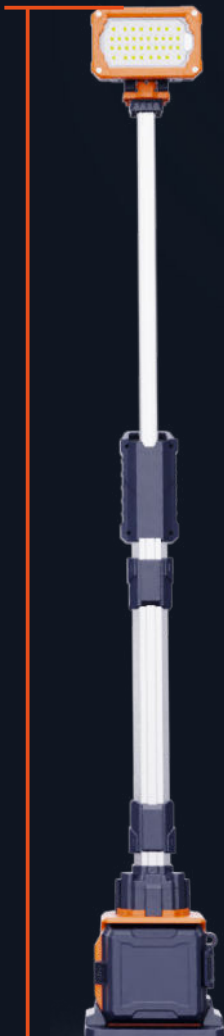


Sports

One person operation

Less than 3.0Kg excluding battery.

1.4m



0.9m



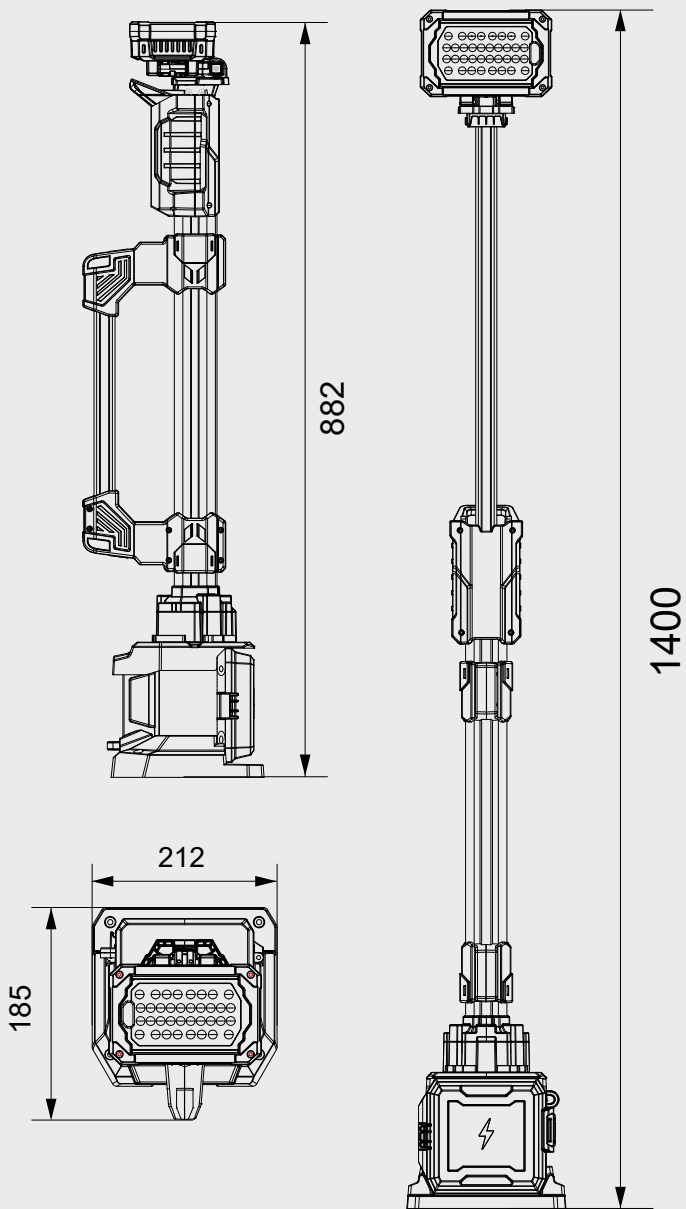
Specifications

TL-100

Height	0.9m-1.4m
Weight	3.0kg
Power Supply	D24 series battery pack
Lumens	0-4,000Lm
Run Times	>8 hours (Standard mode, D24-100)
IP Grade	IP66



Size (mm)



Package

Model	TL-100
Size of Carton	980x260x270mm
Gross Weight of Carton	5.0kg
PCS/Carton	1

