

NEW

Now with rotatable
spring guide head



CABLE PULLING SYSTEMS

For professional cable laying



Verbindungen mit **System**
The **Power** of Partnership

Klauke[®]

Cable pulling systems

The innovative generation of our cable pulling systems offers convincing quality and a host of ingenious details for professional cable laying. These products are set apart by their reliability and long service life.

Dura Spinner

Cable pulling systems with the innovative, extremely robust, twisted polyester fish tape (3.0 mm dia.) and rotatable spring guide head. Versions: 20 and 30 m



Highlights

- Extremely robust fish tape for very narrow bending radii
- This product's high thrust makes it the ideal solution for laying additional cables
- New rotatable spring guide head
- Suitable for rigid and flexible conduits
- Tape pulled in and out very simply
- Can also be uncoiled on the floor
- Including accessories and spare parts
- Robust ABS housing
- No more broken tapes

The new generation of cable fish tapes

Incredibly flexible, incredibly robust

Dura Spinner

Part No.	Item
52074656	Dura Spinner 3 mm dia., 20 m version, including rotatable spring guide head
52074657	Dura Spinner 3 mm dia., 30 m version, including rotatable spring guide head

Scope of supply



Part No.	Item	Qty.
52055263	Rotatable spring guide head with eyelet, M4, 6 mm dia.	1
52055266	Tension head with eyelet, M4	1
52055311	Pulling aid 3–6 mm dia.	1

Replacement tapes



Part No.	Item
52074654	Dura Spinner replacement tape 3 mm dia., 20 m, including rotatable spring guide head
52074655	Dura Spinner 3 mm dia., 30 m, including rotatable spring guide head

Speedy Spinner

Cable pulling device with fibreglass fish tape 3 mm dia.
Versions: 20, 30 and 40 m



Highlights

- Unique, user-friendly design
- New rotatable spring guide head
- Fibreglass tapes pulled in and out very simply and quickly
- Can also be uncoiled from the floor
- One-handed operation
- Inc. accessory set and pulling aid
- Lengths: 20, 30 and 40 m
- Robust ABS plastic housing

The portable cable pulling device

Incredibly easy to use

Speedy Spinner is extremely easy to handle. Cables are guaranteed to be laid quickly and trouble free, even in conduits with narrow radii.

Fibreglass fish tape

Part No.	Item
52055298	Fibreglass fish tape 3 mm dia., 20 m version
52055299	Fibreglass fish tape 3 mm dia., 30 m version
52055300	Fibreglass fish tape 3 mm dia., 40 m version

Scope of supply

	52055304  (1)	52055264  (2)	52055306  (3)	52055307  (4)
52055308  (5)	52055309  (6)	52055311  (7)	52055310  (8)	

Part No.	Item	Qty.	Fig.
52055304	Tension heads with eyelet M5	3	(1)
52055305	Spring guide head with eyelet M5	1	(2)
52055306	Spring guide head M5 – 10 mm	1	(3)
52055307	Spring guide head M5 – 13 mm	1	(4)
52055308	Start/end sleeves M5	3	(5)
52055309	Connecting sleeves	3	(6)
52055311	Pulling aid 3 - 6 mm dia.	1	(7)
52055310	Cable grip M5, 4 - 15 mm dia.	1	(8)

New items

Part No.	Item
52055264	Rotatable spring guide head with eyelet M5



Accessories

52055304  (1)	52055308  (5)	52055309  (6)	52055311  (7)
---	---	---	---

Part No.	Item	Qty.	Fig.
52055303	10-part accessory set		
Consisting of:			
52055304	Tension heads with eyelet M5	3	(1)
52055308	Start/end sleeves M5	3	(5)
52055309	Connecting sleeves	3	(6)
52055311	Pulling aid 3 - 6 mm dia.	1	(7)



Part No.	Item
52055289	Fibreglass replacement tape, 3 mm dia., 20 m
52055290	Fibreglass replacement tape, 3 mm dia., 30 m
52055291	Fibreglass replacement tape, 3 mm dia., 40 m

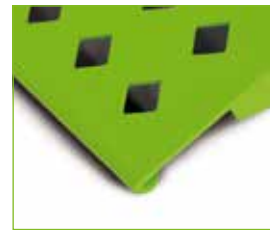
The Easy Roller series Incredibly flexible

Highly resistant yet lightweight, making easy work of transporting the Easy Roller. And not only that: The bearings with low friction losses and side guides integrated into the rollers make it much easier to coil and uncoil large cable drums. The shallow incline of the ramp allows the cable drum to be positioned without any effort. And another benefit: The rollers can be flexibly adjusted to the cable drum diameter.

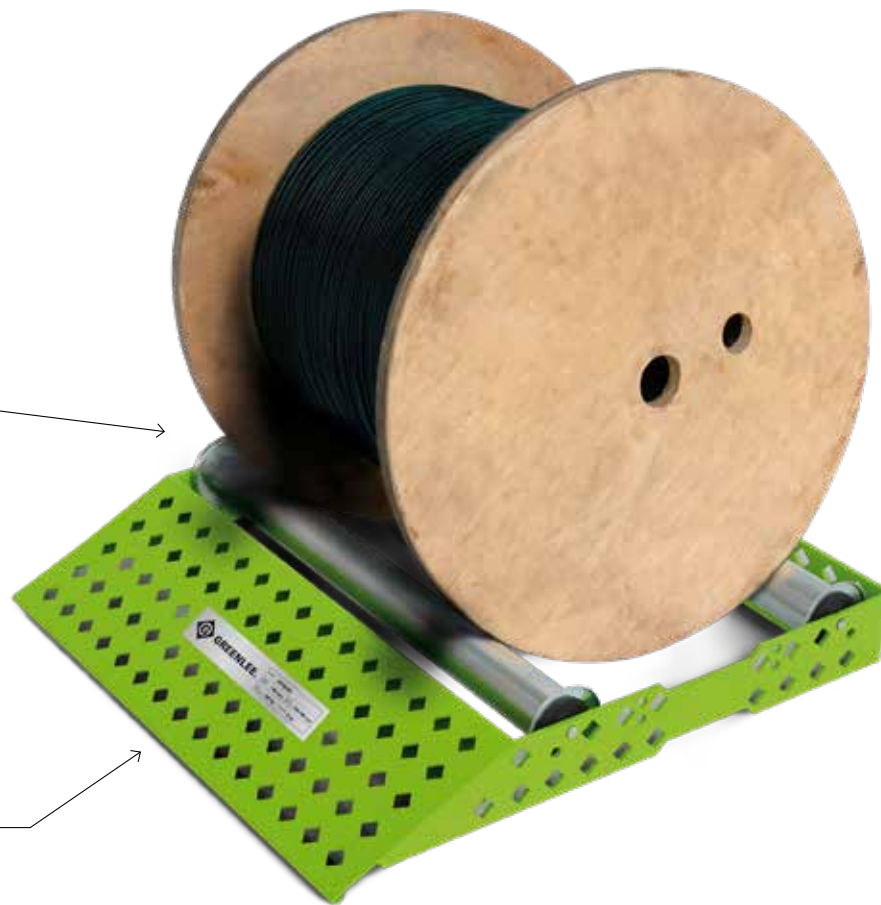
Easy Roller



Flexible adjustment to the cable drum diameter



Ramp with shallow incline for easy coiling and uncoiling of the cable drum



Easy Roller

Part No.	Item	Drum dia. mm	Dimensions mm	Load Kg	Weight Kg	Material
52055383	Easy Roller Standard	200 - 700	530 x 570 x 90	200	10	Steel
52055384	Easy Roller Wide	200 - 700	670 x 605 x 95	250	11	Steel

Highlights

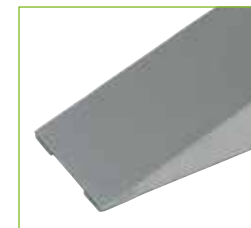
- Highly robust, lightweight version
- 30% lighter than conventional cable drum roller, one of the lowest weight rollers on the market
- Ramp with shallow incline for simple uncoiling and coiling of the cable drum
- The rollers can be adjusted to the cable drum diameter
- Rollers with integrated side guides
- Use of high-quality bearings for fast and simple uncoiling of the drum

Easy Roller Plus

Three different versions of cable drum uncoilers
Consisting of two cable drum uncoiling rails and one spacer rail



Ball bearing mounted rollers



Reduced incline



Easy Roller Plus

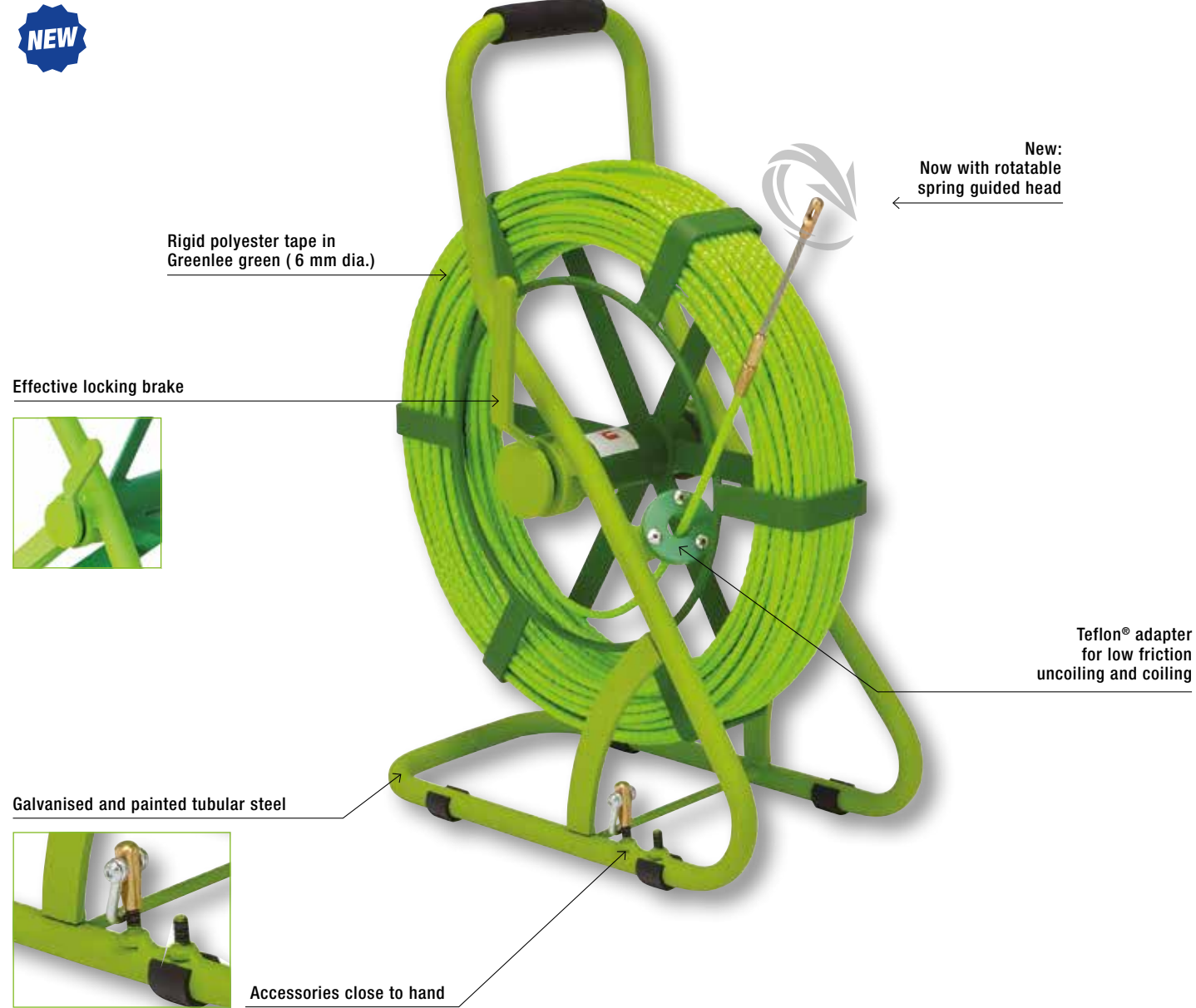
Part No.	Item	Drum dia. mm	Dimensions mm	Load kg	Weight kg	Material
52055401	Easy Roller Plus S	400 - 1200	950 x 145 x 110	1000	33.5	Steel
52055402	Easy Roller Plus L	400 - 1800	1050 x 145 x 110	1000	35.5	Steel
52055403	Easy Roller Plus ALS	400 - 1200	950 x 145 x 110	1000	19.5	Aluminium

Highlights

- Reduced incline of the ramp for simple loading of the cable drum
- Handles for easy positioning and carrying
- Ball bearing mounted rollers
- U-sections for fixing the uncoiling rails

Polyester Butler

Polyester cable pulling system with rotatable spring guide head and steel reel basket

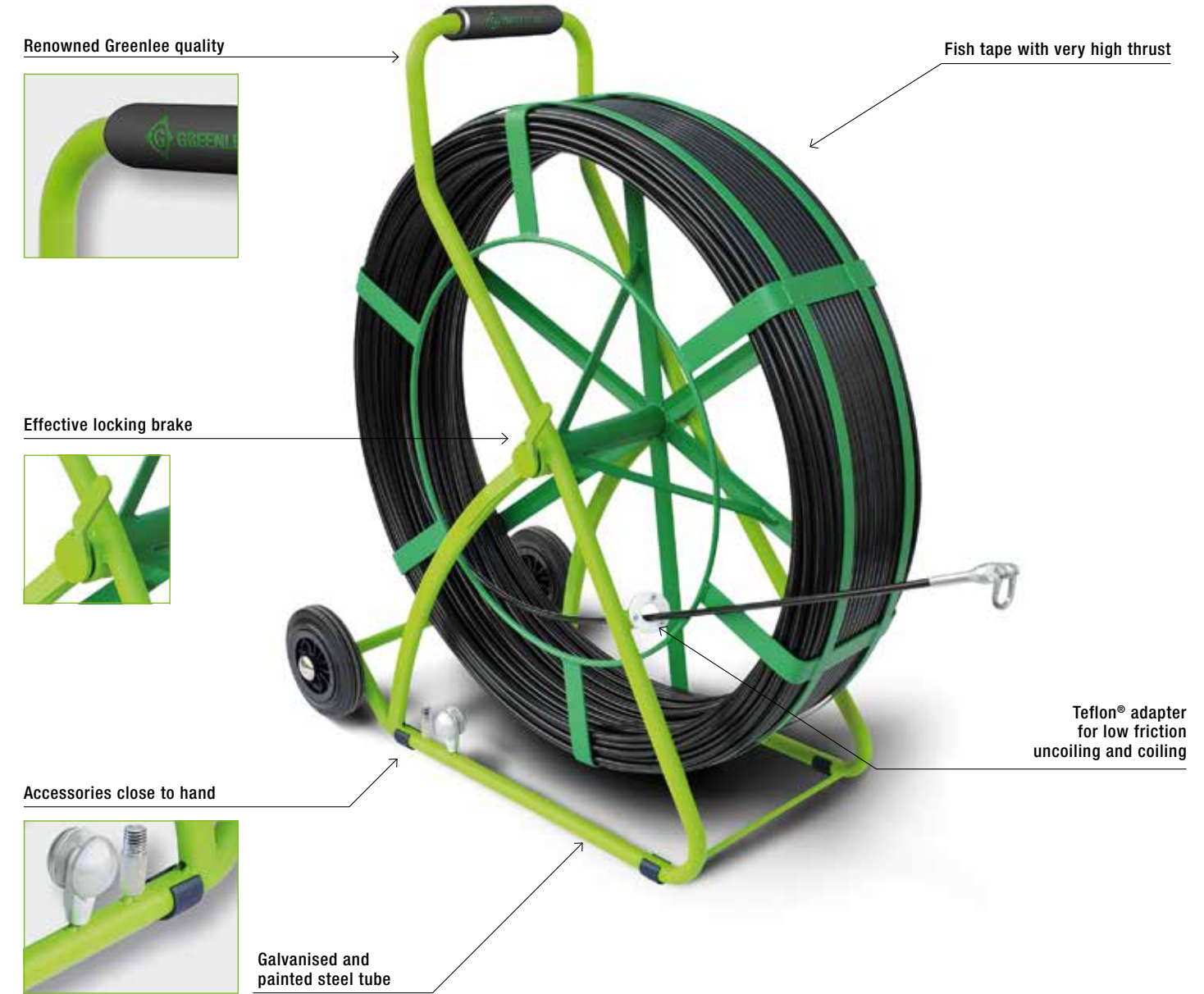


Highlights

- Unique design, galvanised and painted
- Highly robust construction
- Accessories mounted to the Polyester Butler itself
- Teflon extension connector for low friction when uncoiling and coiling
- Effective locking brake (wheel blocked at ¼ revolution)
- Ball bearing mounted for low-friction uncoiling and coiling
- With rotatable spring guided head

Smart Butler

Fibreglass cable pulling system with steel reel basket and accessories



Highlights

- Unique design, galvanised and painted
- Highly robust construction
- Accessories mounted to the Smart Butler itself
- Teflon extension connector for low friction when uncoiling and coiling
- Effective locking brake (wheel blocked at ¼ revolution)
- Ball bearing mounted for low-friction uncoiling and coiling

The mobile cable pulling-in device
Incredibly versatile

No matter whether you want to install conductors in industrial buildings or need to lay earth cables - the stable tubular steel, floor-mounted Smart Butler offers a diverse range of applications. It does everything for you and follows you wherever you go. And the best thing: The high-quality, ingenious details such as the Teflon® adapter and handy accessories make operations more efficient from the word go.



Smart Butler
Version with rollers



Smart Butler
Version without rollers



Polyester Butler
Version only without rollers

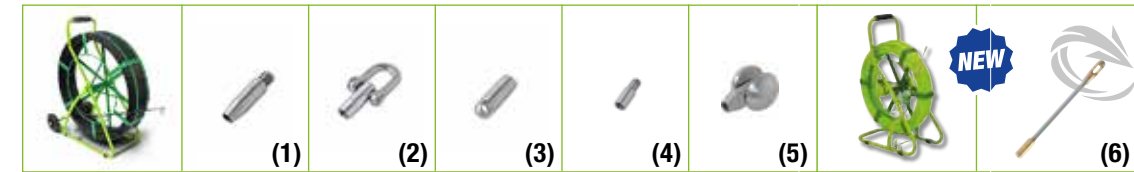
Smart Butler

Steel reel basket dia. mm	Fish tape dia. mm	Length m	Part No.	Suitable replacement tapes
330	4.5	40	52055313	52055317
		60	52055315	52055318
		80	52055316	52055319
550	6	40	52055325	52055329
		60	52055326	52055330
		80	52055327	52055331
		100	52055328	52055332
		40	52055337	52055342
		60	52055338	52055343
660	7.5	80	52055339	52055344
		100	52055340	52055345
		120	52055341	52055346
790	9	40	52055347	52055353
		60	52055348	52055354

Steel reel basket dia. mm	Fish tape dia. mm	Length m	Part No.	Suitable replacement tapes
790	9	80	52055349	52055355
		100	52055350	52055356
		120	52055351	52055357
		150	52055352	52055358
		150	52055359	52055363
		200	52055360	52055364
1000	11	250	52055361	52055365
		300	52055362	52055366

Polyester Butler

Steel reel basket dia. mm	Fish tape dia. mm	Length m	Part No.
350	6	50	52074658

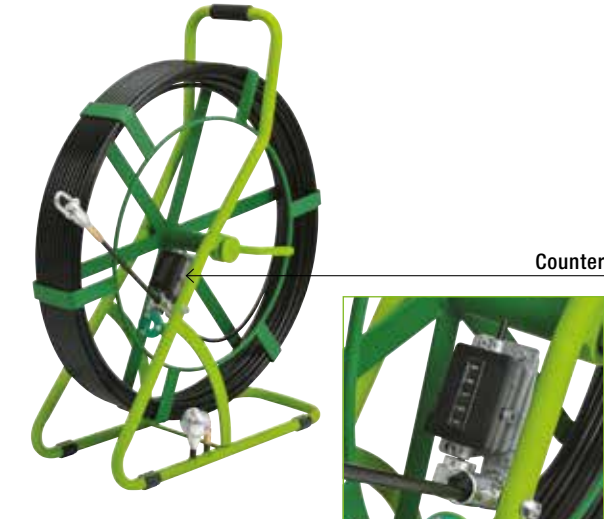


Smart Butler scope of supply

Fish tape dia. mm	Part No.	Item	Qty.	Fig.
4.5	52055321	Start/end sleeve WW 1/4"	1	(1)
	52055323	Starting spinner with shackle WW 1/4"	1	(2)
	52055320	Tension head with eyelet WW 1/4" for 4.5 - 6 mm dia.	1	(3)
	52055322	Connecting sleeve	1	(4)
6	52055333	Start/end sleeve WW 1/4"	1	(1)
	52055335	Starting spinner with shackle WW 1/4"	1	(2)
	52055320	Tension head with eyelet WW 1/4" for 4.5 - 6 mm dia.	1	(3)
7.5	52055334	Connecting sleeve	1	(4)
	52055369	Crimped with start/end sleeve	1	(1)
	52055367	Starting spinner with shackle	1	(2)
9	52056116	Connecting sleeve WW 1/2" M12	1	(4)
	52055368	Starting spinner with guide roller	1	(5)
	52055370	Crimped with start/end sleeve	1	(1)
11	52055367	Starting spinner with shackle	1	(2)
	52055372	Connecting sleeve WW 1/2" M12	1	(4)
	52055368	Starting spinner with guide roller	1	(5)
	52055371	Crimped with start/end sleeve	1	(1)
	52055367	Starting spinner with shackle	1	(2)
	52056117	Connecting sleeve WW 1/2" M12	1	(4)
	52055368	Starting spinner with guide roller	1	(5)

Polyester Butler scope of supply

Fish tape dia. mm	Part No.	Item	Qty.	Fig.
6	52055321	Start/end sleeve WW 1/4"	1	(1)
	52055323	Starting spinner with shackle WW 1/4"	1	(2)
	52055320	Tension head with eyelet WW 1/4" for 4.5 - 6 mm dia.	1	(3)
	52055265	Rotatable spring guide head with eyelet M5, 8 mm dia.	1	(6)



Smart Butler also available with counter, Part No. suffix "C"

Polyester fish tapes

4.5 mm dia. with screw-off M5 start/end sleeve, spring guided head and pulling aid



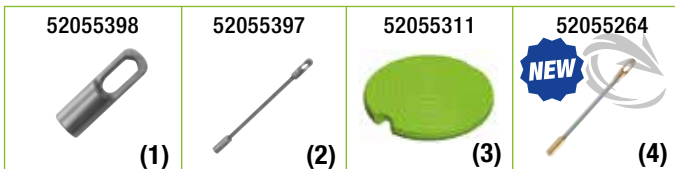
Highlights

- 50% less friction than nylon tapes
- Replaceable spring guided head and eyelet
- Pulling aid supplied as standard
- Extremely flexible and practically unbreakable
- Lengths: 10/15/20/25/30 m

Polyester fish tape

Part No.	Item
52055292	Polyester fish tape green 4.5 mm dia., 10 m
52055293	Polyester fish tape green 4.5 mm dia., 15 m
52055294	Polyester fish tape green 4.5 mm dia., 20 m
52055295	Polyester fish tape green 4.5 mm dia., 25 m
52055296	Polyester fish tape green 4.5 mm dia., 30 m

Accessories



Part No.	Item		
52055396	Accessory set (5 part) for polyester fish tapes		
Part No.	Consisting of:	Qty.	Fig.
52055398	Tension heads with eyelet M5	2	(1)
52055397	Spring guide head with eyelet M5	2	(2)
52055311	Pulling aid	1	(3)

Part No.	Item	Fig.
52055264	Rotatable spring guided head with eyelet M5, 7 mm dia.	(4)

Perlon® fish tapes

4 mm dia. with crimped M4 initial piece, screw-off spring guided head and eyelet

Perlon fish tape

Part No.	Item
52055276	Perlon fish tape 4 mm dia., 5 m
52055277	Perlon fish tape 4 mm dia., 10 m
52055278	Perlon fish tape 4 mm dia., 15 m
52055279	Perlon fish tape 4 mm dia., 20 m
52055280	Perlon fish tape 4 mm dia., 25 m
52055281	Perlon fish tape 4 mm dia., 30 m

Accessories

Part No.	Item
52055288	Spare parts for Perlon fish tapes, spring guide head M4, eyelet



Nylon fish tapes

4 mm dia. with spring guided head and eyelet

Nylon fish tape

Part No.	Item
52055270	Nylon fish tape 4 mm dia., 5 m
52055271	Nylon fish tape 4 mm dia., 10 m
52055272	Nylon fish tape 4 mm dia., 15 m
52055273	Nylon fish tape 4 mm dia., 20 m
52055274	Nylon fish tape 4 mm dia., 25 m
52055275	Nylon fish tape 4 mm dia., 30 m
52055260	Nylon fish tape 4 mm dia., 10 m Including rotatable spring guided head
52055261	Nylon fish tape 4 mm dia., 20 m Including rotatable spring guided head
52055262	Nylon fish tape 4 mm dia., 30 m Including rotatable spring guided head

Accessories



Part No.	Item
52055263	Rotatable spring guided head with eyelet, M4, 6 mm dia.



Steel fish tapes

4 mm dia. with crimped M4 spring guided head and eyelet

Steel fish tape

Part No.	Item
52055283	Steel fish tape 4 mm dia., 10 m
52055285	Steel fish tape 4 mm dia., 20 m



Cable installation lubricant

Cable lubricant, liquid

for optical fibres and heavy cables



Part No.	Content kg
52055381	5
52055382	10

Lubricating foam bottle

for large cable diameters in the electrical installation sector of trade and industry



Part No.	Content kg
52055380	1

Lubricant spray

for electrical installation in 16 - 25 mm dia. pipes, non-flammable



Part No.	Content ml
52055378	400

Cable lubricant gel

in tube for electrical installations in 16 - 25 mm dia. pipes



Part No.	Content kg
52055379	0.25

Highlights

- For electrical/telephone cables in 16 – 150 mm pipes
- Reduces friction by up to 80 %
- Biodegradable
- Silicon-free
- Lubricating foam spray with non-flammable propellant

Application examples:

Type	Tape dia.	Pipe dia.	Thrust	Min. curve radius	Breaking strength	Tensile force with start/end sleeve	Recommended length
	mm	mm	kg	mm	kg	kg	m
Fibreglass							
Speedy Spinner	3	16 - 32	+++	160	400	110	20-30
	4.5	40 - 60	+++	310	1200	>200	40-80
	6	50 - 80	+++	400	2000	>300	40-110
Smart Butler	7.5	63 - 100	+++	500	3000	>400	40-120
	9	63 - 125	+++	620	4500	>500	40-150
	11	63 - 150	+++	770	7500	>700	150-300
Polyester							
Dura Spinner	3	16 - 40	+++	50	300	100	20-30
Polyester Butler	6	40 - 60	+++	160	600	300	50
Nylon, Perlon®							
	4	16 - 25	+	80	280	120	10-20
Steel							
	4	16 - 25	+	100	900	115	10-20

www.klauke.com



Klauke[®]

Gustav Klauke GmbH
Auf dem Knapp 46
D-42855 Remscheid

Phone: +49 (0) 2191 / 907 - 0
E-mail: Klauke-Info@Emerson.com
Internet: www.klauke.com


EMERSON

© 2019 Gustav Klauke GmbH. All rights reserved. Subject to change without notice. The Emerson logo and the Klauke logo are registered trade marks of Emerson Electric Co. in the USA and other countries. BRKES19GB 3.000 04/19 1